



# GMT MONTHLY MEMBERSHIP PROGRESS REPORT

Results as of: 2/28/2018

Multiple District 411

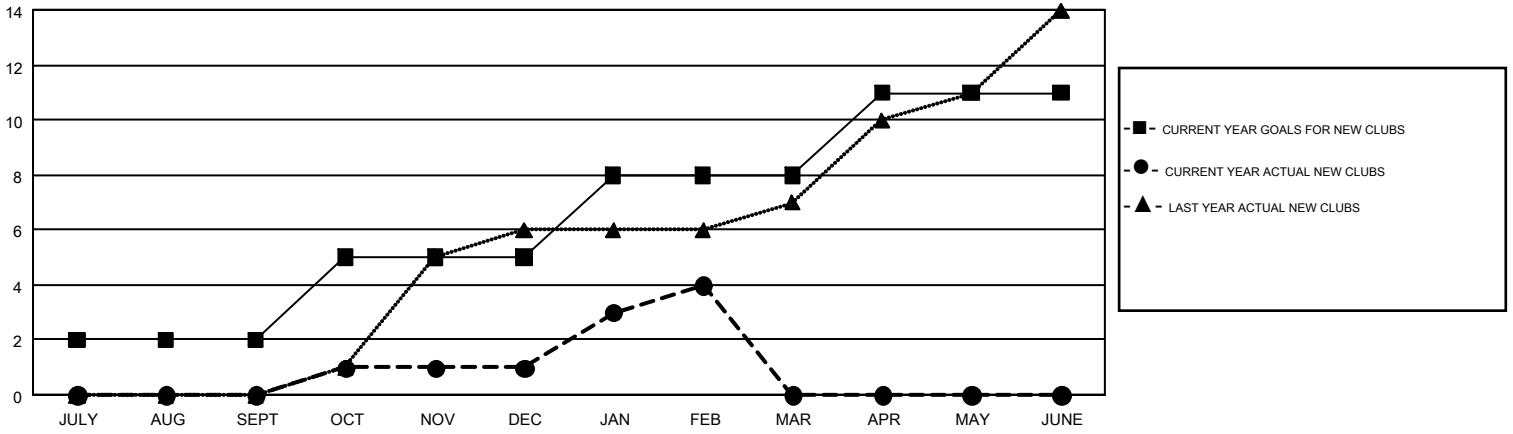
LOCATION: KENYA AFRICA

GMT: KAMAL JOSHI

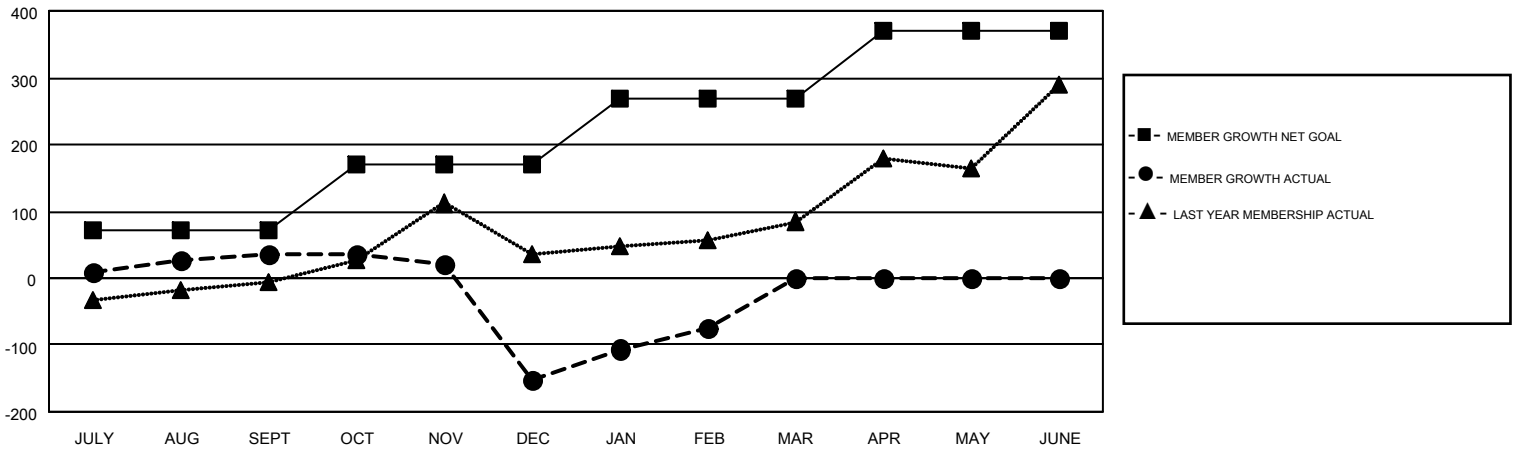
GMT CA 6-Afr

Clubs				Members			
RESULTS FOR 2017-2018				RESULTS FOR 2017-2018			
QUARTER	NEW CLUB GOAL	NEW CLUBS	DROPPED CLUBS	QUARTER	MEMBER GROWTH NET GOAL	MEMBER GROWTH ACTUAL	DROPPED MEMBERS ACTUAL (including transfers)
JULY/AUG/SEPT	2	0	0	JULY/AUG/SEPT	72	112	74
OCT/NOV/DEC	3	1	6	OCT/NOV/DEC	97	91	258
JAN/FEB/MAR	3	3	0	JAN/FEB/MAR	99	146	54
APR/MAY/JUNE	3	0	0	APR/MAY/JUNE	102	0	0

GOALS AND ACTUAL NEW CLUBS CUMULATIVE



GOALS AND ACTUAL MEMBERS CUMULATIVE



DROPPED CLUBS: 6	60 CLUBS OF 129 ADDED 1 OR MORE NEW MEMBERS	<u>GENDER DISTRIBUTION</u>	
		MALE	2,072 (63.89%)
		FEMALE	1,171 (36.11%)
<u>DROPPED MEMBERS</u>		TOTAL FAMILY UNIT MEMBERS 799	
DECEASED	10	FAMILY MEMBERS PAYING HALF DUES 448	
CLUB CANCELLED	104		
OTHER	272		
TOTAL	386		

[CLICK HERE FOR CUMULATIVE MEMBERSHIP DATA](#)